

# BRILINE B3



Ideal solution for channel letters with a depth of **100 - 150 mm** and light boxes with **enhanced brightness**. Due to professional optics directs more light to the surface of illuminated signs. Cost-effective solution to achieve **more brightness at reasonable price**.

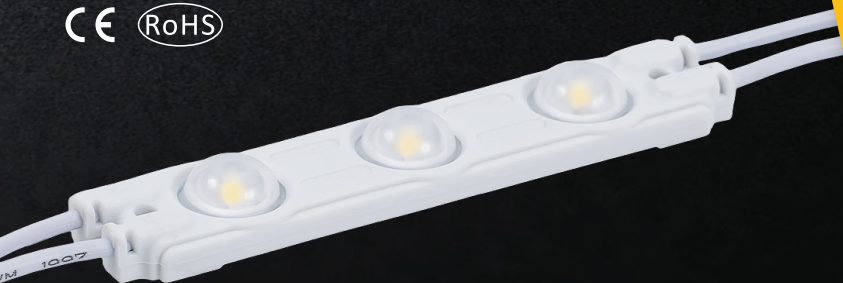
Various color solutions available ● 7500K ● ● ● ● ●

## Specially designed for:

- Channel letters
- Light boxes with enhanced brightness
- Recommended installation depth 100 - 150 mm

## Features:

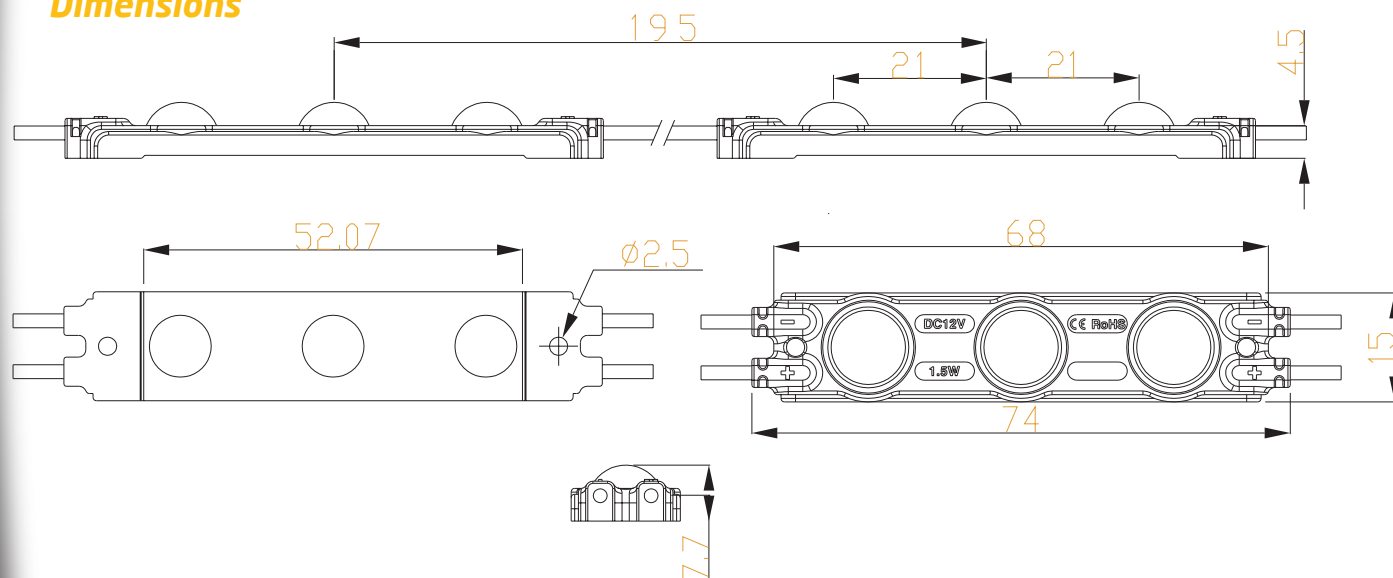
- Special optics designed for channel letters
- Efficiency up to **100 lm/w**
- Maximum Tj temperature <80 °C
- **LM80** international certificate for LEDs
- HB fire protection level
- High protection level of IP65
- Light decay < 30% after **50,000 hrs**
- **5 years warranty**



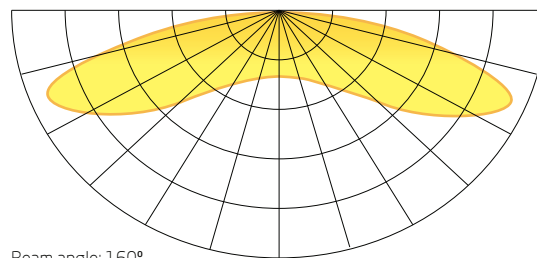
[www.kaisenelectric.com](http://www.kaisenelectric.com)

# KAISEN

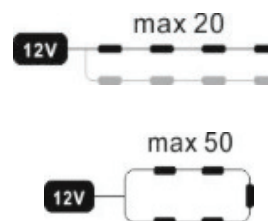
## Dimensions



## Light distribution graph



Beam angle: 160°



## Technical information

Colors available :	●	●	●	●	○
Power	1,5 W	1,5 W	1,5 W	1,5 W	
Light output	17,5 lm	180 lm	22,5 lm	143 lm	
LED type	2835				
Input	12VDC				
Color temperature	○ 7500 K				
Beam angle	160°				
Protection level	IP 65				
Center-to-Center distance	195 mm				
Working temperature	-30 +50 °C				

## Packing information

Packing type	Chain	Package	Box
Quantity	20 pcs	100 pcs	2000 pcs
Weight	0,16 kg	0,8 kg	21 kg